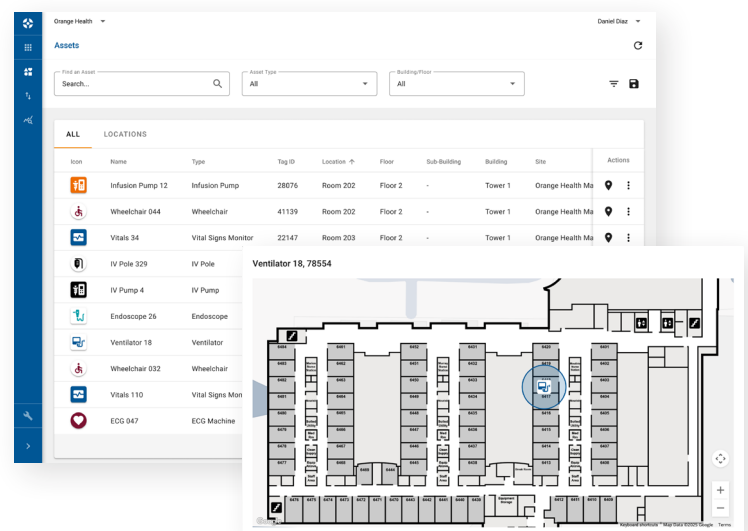


*Assets<sup>RT</sup> lets you find and optimize your equipment usage facility-wide, so you can focus on what matters most.*

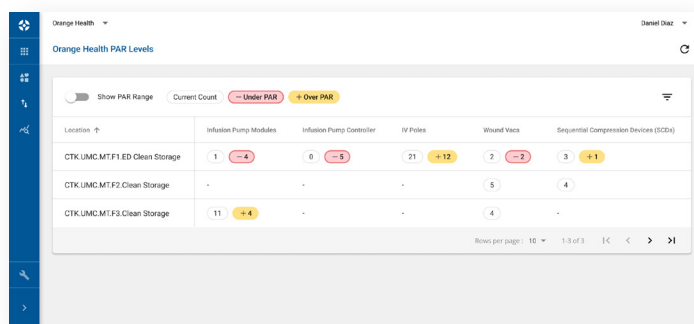
## Smart Asset Search – All the Right Data, All in One Table

Quickly search, filter, and sort all tagged assets by type, location, department, owner(s), and other key attributes, as well as key maintenance details like preventive maintenance due dates and tag battery status. Saved views and recent searches make repeating frequent queries effortless.



## From Map to Metadata – Find What You Need, Fast

Easily locate equipment with live, interactive facility maps that update in real time. Hover to view asset names or click to access complete details including owners, manufacturer, model, serial number, tag ID, preventative maintenance dates, and description. A detailed movement history log shows where assets have been, helping you track their location and usage over time.

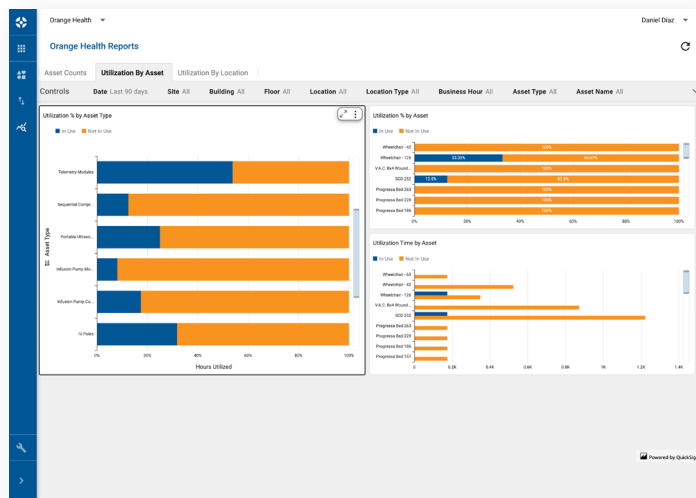


## PAR Dashboard – Know What's Where, and What's Missing

Stay ahead of inventory issues with real-time visibility into asset levels by location. Quickly assess whether you're understocked, overstocked, or within range using customizable PAR thresholds. Set automated email or SMS alerts when counts fall outside defined limits, and use PAR Reports to uncover trends and optimize inventory across your facility.

## Keep Equipment Where It Belongs

Define custom area restrictions and geofence zones to ensure critical equipment stays where it's supposed to. If a tagged asset crosses a designated boundary, the system sends instant alerts to the right staff via SMS or email, preventing asset loss.



## Reporting to Reveal What Matters

Unlock deep insights into how, when, and where your assets are being used. Monitor real-time asset counts and availability, and analyze utilization by asset types, location, and time of day. See hours in use, percentage of time spent in patient rooms, and trends across rooms, floors, and buildings. With interactive filters and exportable reports, it's easy to uncover inefficiencies, spot patterns, and make smarter decisions.

## Benefits of CenTrak's Cloud-Based Applications



**Automatic Updates and Maintenance:** Our team ensures your software and infrastructure stay secure and up to date with automatic upgrades to the latest features and improvements.



**Robust Integrations:** Seamlessly connect CenTrak's Asset Management with your CMMS and Electronic Health Record systems. Our bi-directional CMMS integration streamlines preventive maintenance compliance and recall management.



**Easy Installation:** Cloud-hosted applications reduce server maintenance, lower costs, and alleviate IT burden. Utilize existing access points for location data and network communications or enhance capabilities with CenTrak's clinical-grade infrastructure.



**Enhanced Security:** Assets<sup>RT</sup> is built on the robust, secure, and reliable foundation of Amazon Web Services (AWS). We prioritize advanced encryption, conduct regular security audits, and maintain compliance certifications, including HIPAA.

Contact Us: [www.centrak.com](http://www.centrak.com) | [marketing@centrak.com](mailto:marketing@centrak.com) | 800-515-2928