



## *Real Time Location System for Wireless Emergency Call, Staff Assist, Contact Tracing and Wander Management*



SENIOR APARTMENTS



ASSISTED LIVING



NURSING CARE



SHORT-TERM STAY

As senior living increasingly focuses on resident independence, the industry needs innovative ways to manage risks and respond to emergencies. CenTrak's TruView™ increases visibility to resident location through accurate technology. At an economical price, TruView includes advanced features specifically designed for senior living communities suitable at every stage of care.

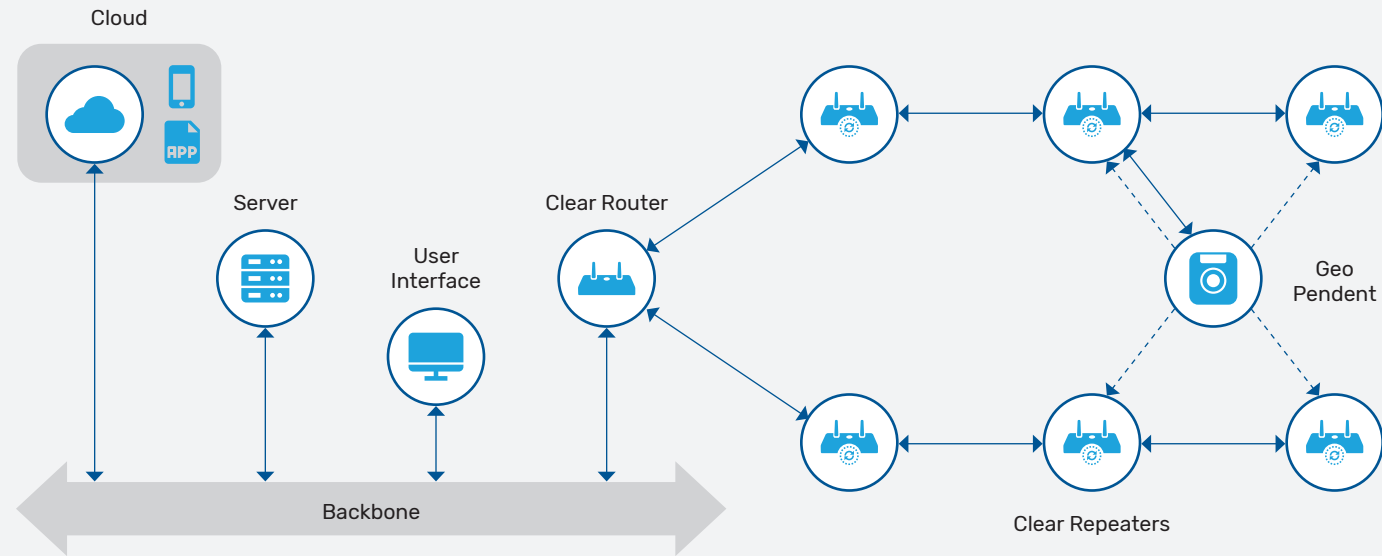
### TruView's complete Senior Living system includes:

- Indoor and outdoor wireless campus coverage
- Safest and most reliable alert delivery network
- Industry's most accurate location technology
- UL 2560 certified wireless emergency call system for both residents and staff
- Wander management and prevention with door lock integration and campus-wide alerting
- Built in Contact Tracing
- Advanced analytics of resident trends and automatic recording of ADLs
- Purpose-built application with elegant user interface accessible from any web browser
- Caregiver mobile app for emergency alert response and recorded resolution
- Integration to EHR and other building systems

## CenTrak's Clear Network™

The Clear Network is a long-range wireless mesh network to support CenTrak's TruView System and communicate emergencies or simple location changes – creating a safe and aware environment for staff and residents.

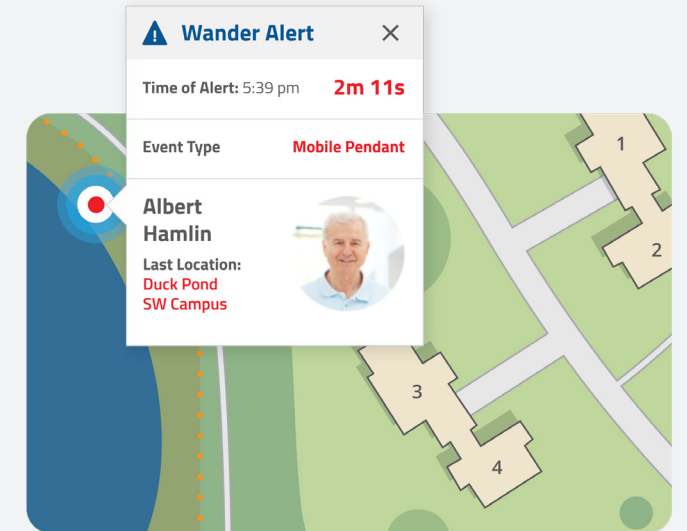
- On-premise system independent of all other community technologies and systems
  - Self-healing network - if needed, information will be automatically redirected
  - LTE Network behind firewall for redundant cloud access
- Local alarms and alerting
  - No dependency on Internet
- Closed wireless network
  - Entirely dedicated to CenTrak devices
  - Network routes duress with highest level of urgency and finds fastest route
- Leverage cloud for:
  - Live backups
  - Secure access from anywhere
  - Secured Caregiver Mobile Alert Application
  - Text messaging & email



### TruView Geofence (ITK-641S H)

Maintain campus-wide security through geofencing of safe zones and off-limit areas

The TruView Geofence requires power only and is connected directly to a cable which can extend to a 300' loop. This device is fully independent with no internet connectivity or software required for local operation to create a safer community both indoors and outdoors. A cable may be buried outdoors to provide protection over large areas such as ponds, courtyards and walking paths; or safely hung indoors to monitor multiple egress points. When a tag is sensed, loiter and/or wander alerts are triggered. The Geofence can be wired into Access Control or directly to MagLocks on a door or gate for ultimate protection.



### Clear Router (IT-104)

Creates, secures, and manages the Clear Network

The Clear Router is a central component of the CenTrak wireless mesh network. This device is externally powered by a single Ethernet Connection and connects directly to the TruView Server. The Active UHF system provides long-range network coverage across a campus or large residential complex. Economically propagate up to a 300-foot radius while the Clear Repeaters provide the ability to extend its range across acres.



### TruLocator™ (IT-305) And TruLocator with Battery Pack (ITK-306)

Deployed in resident rooms and common living spaces to create accurate room-level location visibility

The TruLocator emits a combination of technologies including CenTrak's Second Generation Infrared (Gen2IR™) and standard Bluetooth Low Energy (BLE) to offer simple installation and precise locating. This device can be plugged into a wall outlet or battery powered to be discretely hung on a ceiling or wall.

### Clear Repeater (ITK-105)

Extends Wireless Network

The Clear Repeater utilizes CenTrak's custom mesh network to extend wireless coverage throughout the campus, including outdoor walking paths, parking lots, and indoor areas such as stairwells.

Emergencies can happen anywhere, and the clear repeater easily extends coverage without requiring the constant management and attention that Wi-Fi networks require.

This device is designed to be easily installed throughout senior communities with a 120VAC to 12V adapter (via standard power outlet, no Ethernet connection required) and includes a built-in battery backup that provides the Clear Network with 24 hours of operation during power outages.



### TruView Controller Kit (ITK-640S H)

Installed out of sight in a secure location to provide the utmost protection and Access Control integration via wireless connectivity

The TruView Controller kit (standalone door controller, keypad and exciter antenna with cable) generates a Low Frequency exciter field that defines corridor, elevator, and door coverage, and supports multiple alarm types. For example, a silent loiter alert is generated when a Geo enters the Controller's exciter field for the length of time the Geo remains in the high risk area. Alerts are also available on mobile handsets, text messaging, and other devices without any requirement for an ethernet connection. If desired, the Controller can then automatically lock the door or disable the associated elevator. Wander alarms are also enabled if the protected areas are breached. This kit is designed to provide senior living communities with a complete wander management platform and full lock down capabilities.



### Common Room Locators (ITK-307)

Deployed in community common spaces to create accurate location visibility

This device is easily installed on ceilings in areas for larger spatial coverage and is battery operated to provide room-level accuracy within a community's common areas. The Monitor is a Second Generation Infrared (Gen2IR™) and BLE signaling unit which transmits a unique location ID that is received by the CenTrak Geo™.

## CenTrak Geo™ (IT-726E BK & IT-726E WT)

The Geo reports location data in real time, anywhere on the community's campus.

This lightweight device is a battery powered Active UHF sensor that receives Second Generation Infrared signals emitted by TruLocators as well as Common Room Locators. Low Frequency technology is built in to dynamically choose which tags will lock or alarm selected doors to support wander prevention initiatives as seniors age in place. Bluetooth Low Energy (BLE) technology is also supported.

The Geo is waterproof, sleek, and compact. Its large, recessed button is designed with seniors in mind and helps to prevent false alarms. A secondary button, located on the side of the tag, is used for cancelling events. The tag comes in black or white and is compatible with various attachment styles including wristband, pendant and belt clip. With haptic feedback technology, the geo is the only wearable device in senior living to provide acknowledgement (vibration/LED) and the assurance that the network has successfully received the device's urgent message.



## TruView Pull Cord (ITK-617E)

Stationary emergency call device with three alerting options: pull cord, button press and standard Call-Cord attachment jack

TruView Pull Cord is a small, lightweight device that can be mounted on a wall or other non-metal surface. There is no cabling required to the unit. When a call alarm is sent and successfully delivered, the device receives an acknowledgement back from the TruView system, confirming receipt and providing assurance to the resident or staff member. Acknowledgement indicators include the activation of the device's LED light or optional buzzer. CenTrak's technology provides the location of the Pull Cord device to the Clear Network at all times. If the device is moved, the system will automatically update to indicate its new location.



## TruView Check-In Station (ITK-618E)

Stationary check-in device with easy-to-use button press functionality

TruView Check-In Station is a small, lightweight device that can be mounted on a wall or other non-metal surface. There is no cabling required to the unit. When a resident successfully sends a check-in notice, the device receives an acknowledgement back from the TruView system, confirming receipt and providing assurance to the resident or staff member. Acknowledgement indicators include the activation of the device's LED light or buzzer. CenTrak's technology provides the location of the device to the Clear Network at all times. If the device is moved, the system will automatically update to indicate its new location.

